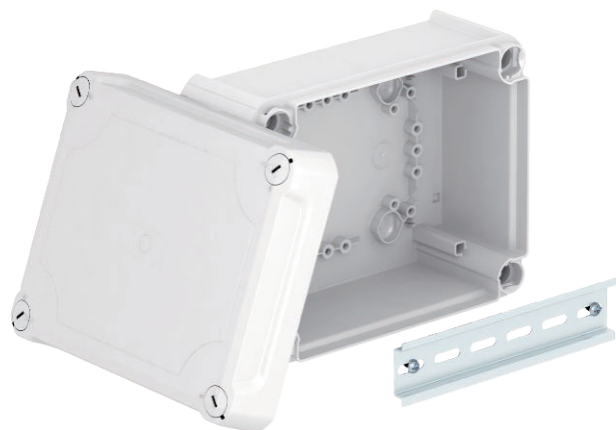


Technical data sheet

Junction box T160, closed, elevated cover

Item no. 2007734



Closed junction box for the connection of cables and lines indoors and in protected outdoor areas. Rectangular design without entries. Suitable for wall and ceiling mounting and on mounting panels. With the option to fasten inside and to mount via the corner domes. High, transparent cover with quick lock, sealable. Made from halogen-free materials.

With hat profile rail.

Junction box according to DIN EN 60670. Flame-resistant to DIN EN 60695/2/11, test temperature 650 °C. Impact resistance IK04 according to DIN EN 50102.



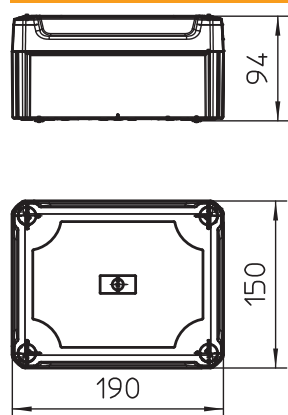
PP/PC Polypropylene/polycarbonate

Additional product text, instruction	acc. to VDE 0471/DIN 695 Part 2-1, test temperature 650°C
Additional product text 1	With closed side panels and hat profile rail
Additional product text 2	Clear internal dimensions: 176x135x84 mm

Master data

Item no.	2007734
Type	T 160 OE HD LGR
Description 1	Junction box, closed
Description 2	with raised cover
Dimension	190x150x94
Colour	Light grey
RAL number	7035
Material	Polypropylene / polycarbonate
Material symbol	PP/PC
Smallest sales unit (VG)	1 Piece
Weight	33,92 kg/100 pc.

Technical data



Length	190,00 mm
Width	150,00 mm
Height	94,00 mm
Clear internal dimensions	176x135x84 mm
Dimension LxWxH	190x150x94 mm
Dimension	190x150x94 mm
Expandable	<input checked="" type="checkbox"/>
Type of entry	Cable
Type of entry	None
Type of housing penetration	Without
Version	Closed
Measured insulation voltage Vi	500,00 V
Equipment	Without
Cover	Not transparent
Cover fastening	Screwed
Entries	None
Entry from rear	<input checked="" type="checkbox"/>
Explosion-tested version	<input type="checkbox"/>
Flame-resistant	acc. to VDE 0471/DIN 695 Part 2-1, test temperature 650°C
Shape	Rectangular
Function maintenance (ETIM)	Without
For Ex zone	Without

Technical data sheet

Junction box T160, closed, elevated cover

Item no. 2007734



Technical data

For Ex zone gas	Without
For Ex zone dust	Without
Fibre-glass reinforced	<input checked="" type="checkbox"/>
Halogen-free	<input checked="" type="checkbox"/>
With screening	<input type="checkbox"/>
with lid	Yes
With cover	<input checked="" type="checkbox"/>
Installation type	Wall/ceiling mounting
Mounting type	Wall/ceiling mounting
Nominal voltage	500,00 V
Protection rating	IP66
Protection rating	IP66
Protection rating IK code	IK04
Sealable	<input checked="" type="checkbox"/>
max. permitted ambient temperature	-5,00 - 60,00 °C
Weatherproof	<input checked="" type="checkbox"/>