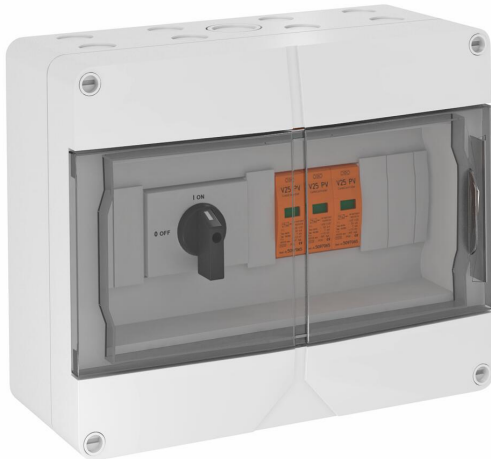


# Technical data sheet

Generator connection box, type 1+2, to 900 V DC with disconnection switch (32 A) 1 x 1 string

Item number: 5088635



System solution for circuit breaker photovoltaic inverter with 1 MPP tracker

- Varistor arrester, connectable with cut-off unit in error-resistant Y circuit to VDE 0100-712 (50539-12)
- Low DC protection level: < 3.0 kV (Voc max = 900 V DC with V25-B+C/0-450PV)
- Circuit breaker (1,000 V; 32 A) for secure switch-off of the DC string cable
- Per protection device there is 1 terminal up to 6 mm<sup>2</sup> pre-mounted in the housing, up to 30 A DC per terminal
- Pre-mounted in polycarbonate housing (IP65), UV-resistant for use outside, including cable gland kit

For DC protection of the inverter in photovoltaic systems.

If there is a danger of condensation forming through wind, ice, temperature or sunlight, further measures may be necessary!



## Master data

Item number	5088635
Type	VG-BC DC-TS900
Description 1	Combiner box
Description 2	2 PV string w. circuit breaker
Manufacturer	OBO
Dimension	900V DC
Colour	Light grey; RAL 7035
Smallest sales unit	1
Unit of quantity	Piece
Weight	182.5 kg
Weight unit	kg/100 pc.

# Technical data sheet

Generator connection box, type 1+2, to 900 V DC with disconnection switch (32 A) 1 x 1 string

Item number: 5088635



## Dimensions

Width	250 mm
Height	200 mm

## Technical data

Response time	<25 ns
Number of inputs	1
Type of entry	Gland
Blow-out	no
Version for	Type 1+2 and BenediktLS32-SMA-A4 DC isolator
Operating temperature, max.	80 °C
Operating temperature, min.	-40 °C
Lightning surge current (10/350 µs)	7 kA
Remote signalling	no
Housing material surge protection components	PC
Maximum continuous voltage DC	900
Conductor cross-section, rigid (single-wire/multiwire), max.	6 mm <sup>2</sup>
Conductor cross-section, rigid (single-wire/multiwire), min.	0.5 mm <sup>2</sup>
Lightning protection zone LPZ	0→2
Max. mains-side overcurrent protection	160
Maximum back-up fuse	160 A
Maximum discharge current (8/20 µs)	50 kA
Installation type	Pre-mounted in the housing
Nominal discharge current (8/20 µs)	30 kA
Network form	DC
DC network form	yes
IT network form	no
Other network form	no
TN network form	no
TN-C network form	no
TN-C-S network form	no
TN-S network form	no
TT network form	no
Test class, type 1	yes
Test class, type 2	yes
Test class, type 3	no
Protection rating	IP65
Protection rating IK code	IK07.

# Technical data sheet

Generator connection box, type 1+2, to 900 V DC with disconnection switch (32 A) 1 x 1 string

Item number: 5088635



## Technical data

	Protection level	≤3,0
	Signalling on device	Visual
	SPD to EN 61643-11	Type 1+2
	SPD to IEC 61643-1	Class I+II
	Permitted temperature range, max.	40 °C
	Permitted temperature range, min.	-25 °C
	Depth	122 mm
	Cable type for surge protection devices	Power cable DC (PV)
	Number of cable entries	16
	Max. Input voltage DC	900 V
	String fuse	Without
	Monitoring function	no
	Max. Input current per string	30 A
	Max. Output current	30 A
	Number of string inputs	1
	Equipped with load-break switch	yes
	Anschlussart Generatoranschlussskasten	Tension spring terminal
	Number of MPPTs	1
	Entries per MPPT	1
	Exits per MPPT	1