

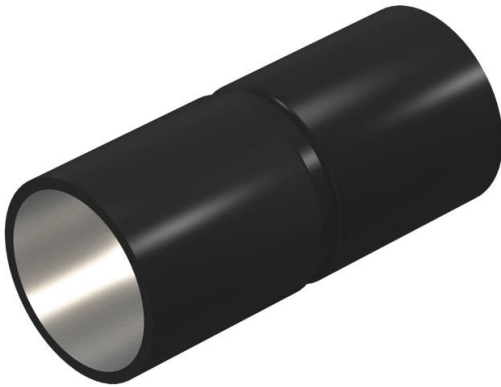
# Technical data sheet

Armoured steel pipe connection sleeve without thread,  
black

Item number: 2046587



Accessory part: plug-in sleeve for the connections between electrical installation pipes. With burr-free inner wall.



**St** Steel

**PE50** PES50 - Polyester/epoxy

## Master data

Item number	2046587
Type	SV50W SW
Description 1	Conduit plug-in coupler
Description 2	without thread
Manufacturer	OBO
Dimension	Ø50mm
Colour	Jet black; RAL 9005
Material	Steel
Surface	PES50 - Polyester/epoxy
Surface standard	
Smallest sales unit	10
Unit of quantity	Piece
Weight	20 kg
Weight unit	kg/100 pc.

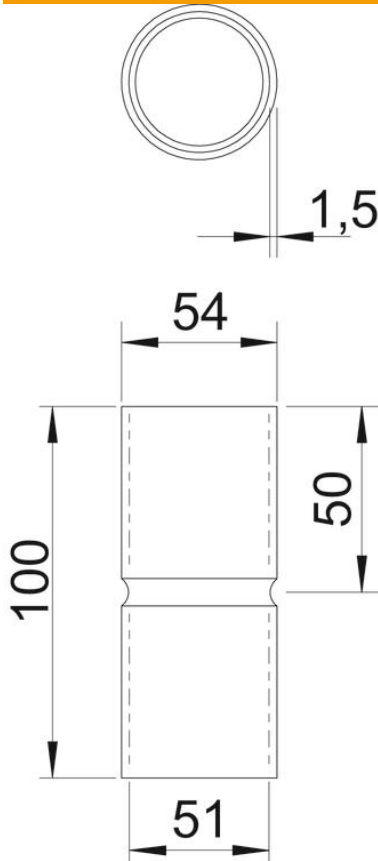
# Technical data sheet

Armoured steel pipe connection sleeve without thread, black

Item number: 2046587



## Dimensions



Length	100 mm
Dimension D	54 mm
Dimension d	51 mm
Dimension L	100 mm
Dimension l	50 mm
Dimension m (mm)	M50
Dimension t	1.5 mm

## Technical data

Version for pipe diameter	50 mm
Size	50
Halogen-free	yes
With inspection opening and lid	no
Brushed surface	no
Polished surface	no
Permitted temperature range, max.	400 °C
Permitted temperature range, min.	-45 °C
Two-part	no