

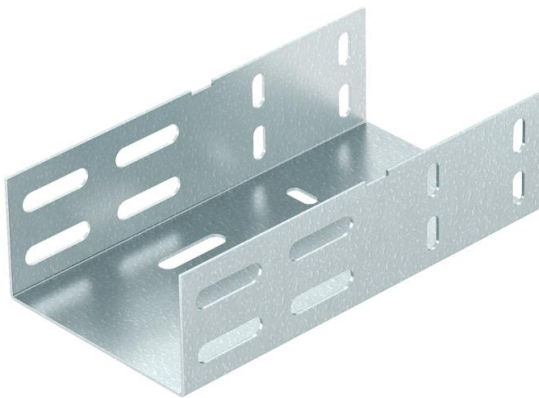
# Technical data sheet

## Connector for expansion compensation DD

Item number: 6065984



Straight connector for compensation of linear thermal expansion.



**St** Steel

**DD** Strip galvanised zinc/aluminium, Double Dip

### Master data

|                     |   |
|---------------------|---|
| Item number         | 6065984                                     |
| Type                | RDV 660 DD                                  |
| Description 1       | Expansion joint connector                   |
| Description 2       | for cable trays, with screws                |
| Manufacturer        | OBO   |
| Dimension           | 60x600x200                                  |
| Material            | Steel                                       |
| Surface             | Strip galvanised zinc/aluminium, Double Dip |
| Surface standard    | DIN EN 10346                                |
| Smallest sales unit | 2   |
| Unit of quantity    | Piece                                       |
| Weight              | 177.6 kg                                    |
| Weight unit         | kg/100 pc.                                  |

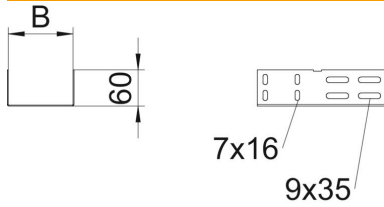
# Technical data sheet

## Connector for expansion compensation DD

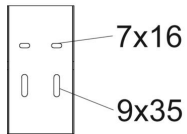


Item number: 6065984

### Dimensions



|                 |        |
|-----------------|--------|
| Length          | 200 mm |
| Width           | 600 mm |
| Width           | 24 in  |
| Height          | 57 mm  |
| Height          | 2 in   |
| Plate thickness | 1.5 mm |
| Dimension B     | 600 mm |
| Dimension L     | 200 mm |



### Technical data

|                                       |                    |
|---------------------------------------|--------------------|
| Version for                           | Straight connector |
| Maintain electrical functions         | no                 |
| Suitable for mesh cable tray          | no                 |
| Suitable for cable ladder             | no                 |
| Suitable for cable tray               | yes                |
| Suitable for cable tray system height | 60 mm              |
| Adjustable connector, horizontal      | no                 |
| Articulated connector, vertical       | no                 |
| Rustproof steel, pickled              | no                 |
| Connection type                       | Screw connector    |
| Wide-span version                     | no                 |