

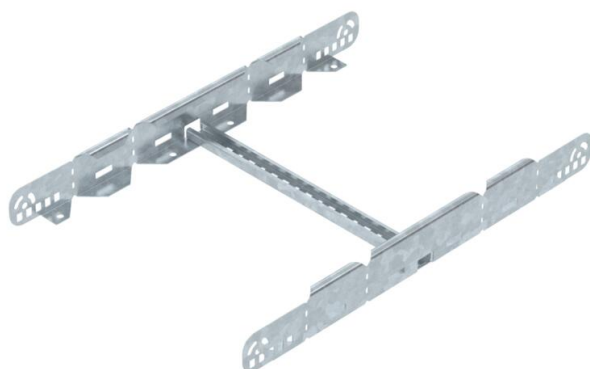
# Technical data sheet

## Multifunctional connector FT

Item number: 6225734



Multifunctional connector for joining cable ladders with a side height of 60 mm. Symmetrical and asymmetrical reductions, infinitely-adjustable bends between 0–60° and add-on tees can be created.



**St** Steel

**FT** Hot-dip galvanised

### Master data

Item number	6225734
Type	LMFV 640 FT
Description 1	Multifunctional connector
Description 2	for cable ladder
Manufacturer	OBO
Dimension	60x400
Material	Steel
Surface	Hot-dip galvanised
Surface standard	DIN EN ISO 1461
Smallest sales unit	1
Unit of quantity	Piece
Weight	144.4 kg
Weight unit	kg/100 pc.

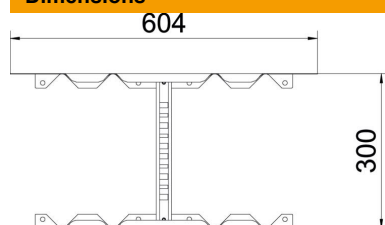
# Technical data sheet

## Multifunctional connector FT



Item number: 6225734

### Dimensions



Length	604 mm
Width	400 mm
Height	60 mm
Plate thickness	1.5 mm
Dimension B	400 mm

### Technical data

Version for	Straight and angle connector
Maintain electrical functions	no
Suitable for mesh cable tray	no
Suitable for cable ladder	yes
Suitable for cable tray	no
Suitable for cable support system width, max.	400 mm
Suitable for cable support system width, min.	400 mm
Suitable for cable tray system height	60 mm
Adjustable connector, horizontal	no
Articulated connector, vertical	no
Rustproof steel, pickled	no
Connection type	Screw connector