

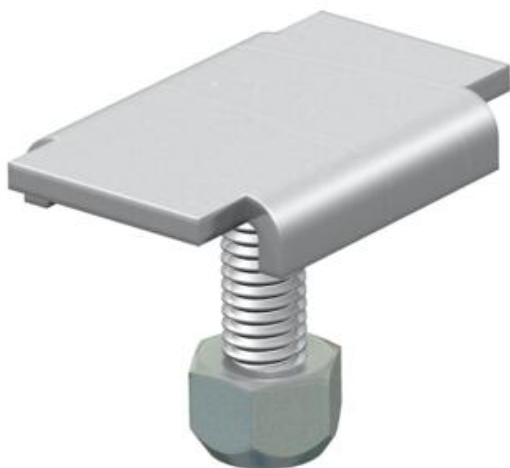
Technical data sheet

Hold-down clamp A2

Item number: 6016529



Clamp for mounting bracket, type MW 45 and MW 90.
Including M6 locknut.



A2 Stainless steel

2B Bright, treated

Master data

Item number	6016529
Type	KS 23 35 A2
Description 1	Hold-down clamp
Description 2	for C-mesh cable tray
Manufacturer	OBO
Dimension	M6x20
Material	Stainless steel
Surface	Bright, treated
Surface standard	
Smallest sales unit	20
Unit of quantity	Piece
Weight	2.015 kg
Weight unit	kg/100 pc.

Technical data

Suitable for mesh cable tray	yes
Suitable for cable ladder	no
Suitable for cable tray	no
Hole diameter	6 mm
Rustproof steel, pickled	no
Connection type	Screw connector