

Technical data sheet

Adapter plate KA-AW 80

Item number: 6346731



Adapter plate with slots for universal fastening to vertical steel girders and walls. The bracket types AW 30, AW 55 and AW 80 can be screwed to the adapter plate.

Please order the hexagonal bolt for bracket mounting (type SKS 12 x 40 GF) separately.



St Steel

FT Hot-dip galvanised

Master data

Item number	6346731
Type	KA-AW 80 FT
Description 1	Adapter plate
Description 2	for wall bracket
Manufacturer	OBO
Dimension	400x103
Material	Steel
Surface	Hot-dip galvanised
Surface standard	DIN EN ISO 1461
Smallest sales unit	1
Unit of quantity	Piece
Weight	424 kg
Weight unit	kg/100 pc.

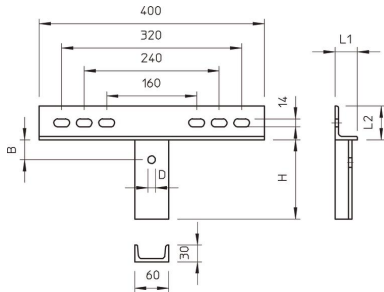
Technical data sheet

Adapter plate KA-AW 80

Item number: 6346731



Dimensions



Length	50 mm
Width	400 mm
Height	270 mm
Dimension B	400 mm
Dimension H	270 mm
Dimension L	50 mm

Adapter plate, bracket load

	Max. total load F in kN	
	KA-AW 30 with bracket:	
Anchor type	AW 30/11 - AW 30/61	AW 55/21 - AW 55/41
BZ 12-15-35/110	3.00	5.50

Max. total load F = cable weight + cable tray + bracket. The load capacity values increase considerably when used in uncracked concrete. Observe the load capacity of the brackets (diagram) and the installation conditions of the DIBt approval (anchors).