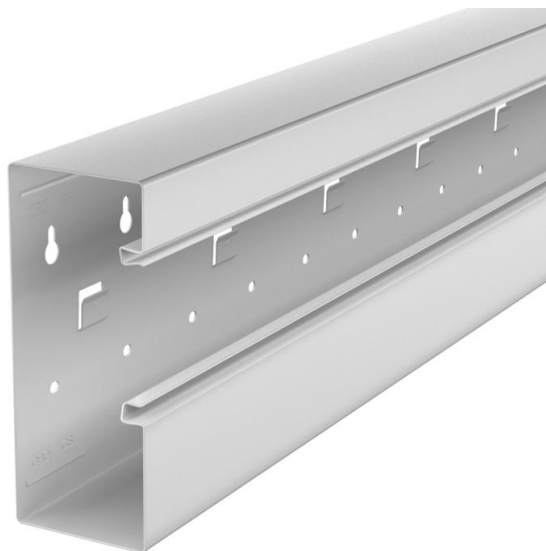


# Technical data sheet

Device installation trunking Rapid 80, trunking width 170,  
trunking height 70, asymmetrical  
Item number: 6277802



GS device installation trunking for mounting on the wall or on fastening panels. The GS device installation trunking possesses self-contacting locking straps to accept a sheet steel partition. The equipotential bonding between the trunking bases takes place using the trunking coupling. The protective measure and the equipotential bonding is guaranteed between the cover and the base by the self-contacting trunking cover. The real system opening is 76.5 mm. The cover must be ordered separately.

Overlengths up to 3,000 mm for trunking bases and covers as well as other RAL colours can be provided on request. The visible surfaces of the painted device installation trunking are laminated.



St Steel

## Master data

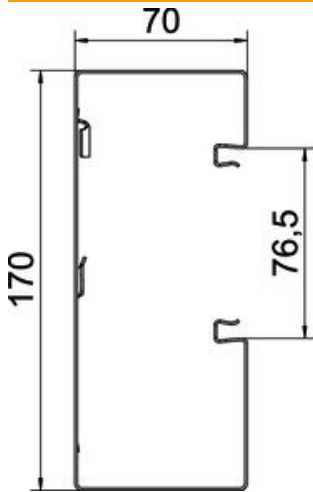
|                     |                              |
|---------------------|------------------------------|
| Item number         | 6277802                      |
| Type                | GS-A70170LGR                 |
| Description 1       | Device installation trunking |
| Description 2       | asymmetrical                 |
| Manufacturer        | OBO                          |
| Dimension           | 70x170x2000                  |
| Colour              | Light grey; RAL 7035         |
| Material            | Steel                        |
| Smallest sales unit | 2                            |
| Unit of quantity    | Metre                        |
| Weight              | 352 kg                       |
| Weight unit         | kg/100 m                     |

# Technical data sheet

Device installation trunking Rapid 80, trunking width 170,  
trunking height 70, asymmetrical  
Item number: 6277802



## Dimensions



|        |          |
|--------|----------|
| Length | 2,000 mm |
| Width  | 170 mm   |
| Height | 70 mm    |

## Technical data

|                                 |                       |
|---------------------------------|-----------------------|
| Number of covers                | 1                     |
| Number of insertable partitions | 1                     |
| Rear panel version (inner side) | With locking lugs     |
| Rectangular shape               | yes                   |
| Base perforation                | with base perforation |
| Halogen-free                    | yes                   |
| Cable retaining clip            | no                    |
| Duct connector                  | no                    |
| Cover mounting type             | Internal              |
| Mounting perforation in base    | yes                   |
| Usable cross-section            | 10010 mm <sup>2</sup> |
| Cover supplied                  | no                    |
| Cover width                     | 76.5 mm               |
| Protective film                 | yes                   |
| Symmetrical                     | no                    |