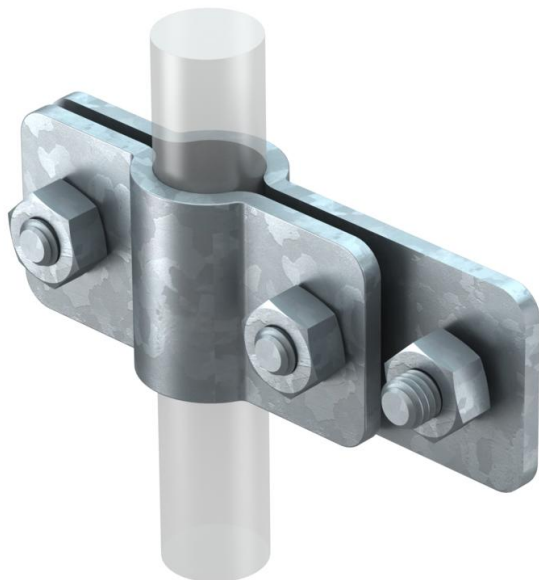


# Technical data sheet

## Connection clamp for earth rod on flat conductor FT



Item number: 5001416



- ST, BP, OMEX and LightEarth systems
- On flat conductors
- Including hex-head screw for attaching flat conductors



**St** Steel

**FT** Hot-dip galvanised

### Master data

Item number	5001416
Type	2730 25 M12 FT
Description 1	Connection clamp
Description 2	for earth rods
Manufacturer	OBO
Dimension	25mm
Material	Steel
Surface	Hot-dip galvanised
Surface standard	DIN EN ISO 1461
Smallest sales unit	5
Unit of quantity	Piece
Weight	46.28 kg
Weight unit	kg/100 pc.

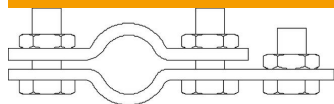
# Technical data sheet

## Connection clamp for earth rod on flat conductor FT

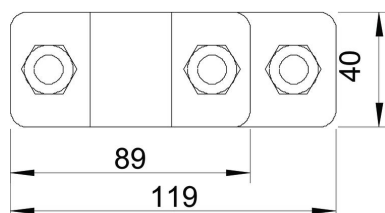


Item number: 5001416

### Dimensions



Dimension A	89 mm
Dimension B	119 mm



### Technical data

Type	Connection clip
Earthing connection diameter for earth rods	25 mm
Short-circuit current (50 Hz)(1 s; $\leq 300^{\circ}\text{C}$ )	8.5
Intermediate plate	no